

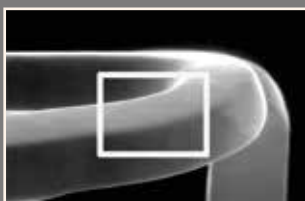
Radix2

RENAL BALLOON EXPANDABLE STENT

Radix2 is a stent with a progressive multicellular design for treatment of the renal artery.



- Excellent scaffolding proximally and good flexibility distally thanks to the unique progressive closed cell design



- Proven biocompatibility enabled by the Carbofilm™ coating, accelerating the rate of endothelization and strut coverage, reducing thrombogenicity



- Platinum markers and no stent foreshortening design allow unmatched placement accuracy and visualization

TECHNICAL DATA

PERIPHERAL STENT	
Stent diameters:	5 - 7 mm
Stent lengths:	12 & 17 mm
Stent material:	Stainless steel AISI 316 LVM
Strut thickness:	175 µm
Strut surface coating:	Carbofilm™
2 platinum radiopaque markers at stent ends	
No stent foreshortening upon expansion	
DEVICE SPECIFICATIONS	
Rapid Exchange (RX)	
Introducer sheath compatibility:	5F
Guiding catheter compatibility:	6F
Guidewire compatibility:	0.018"
Usable Catheter Length - UCL:	75 & 150 cm
Nominal Pressure:	7 - 8 atm
Rated Burst Pressure:	15 atm

Radix2

RENAL BALLOON EXPANDABLE STENT

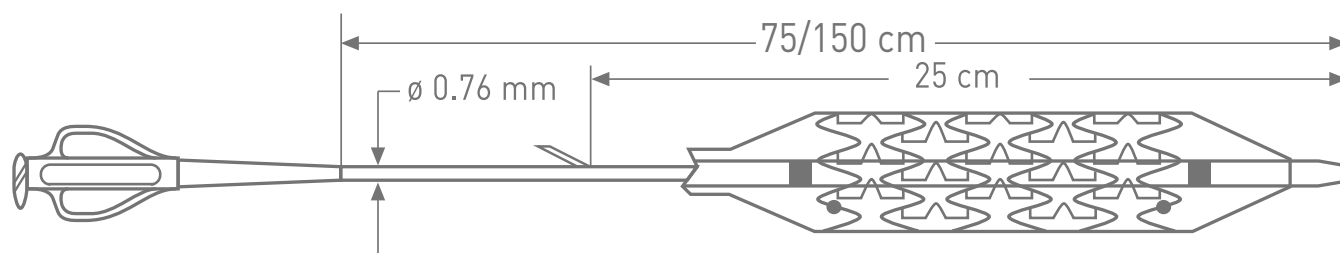
ORDER INFORMATION RADIX2

USABLE CATHETER LENGTH 75 CM

∅ (mm) \ L (mm)	12	17
5.00	ICRW5012S	ICRW5017S
6.00	ICRW6012S	ICRW6017S
7.00	ICRW7012S	ICRW7017S

USABLE CATHETER LENGTH 150 CM

∅ (mm) \ L (mm)	12	17
5.00	ICRW5012L	ICRW5017L
6.00	ICRW6012L	ICRW6017L
7.00	ICRW7012L	ICRW7017L



www.alvimedica.com

Please contact your local sales representative for product availability.

Not for sale in the USA and Japan.

The images shown within this document are of a purely illustrative nature and are not intended to depict reality.

Please consult product labels and package inserts for indications, contraindications, hazards, warnings, cautions and instruction for use.

Manufactured by: CID S.p.a., Strada per Crescentino, sn - 13040 Saluggia (VC) Italy

©2018, Alvimedica. All Rights Reserved.



back to life!